

*Franklyn  
James*



Ionian Building, Limehouse, E14 8DW

£2,300 Per Week



## Ionian Building, Limehouse, E14 8DW

£2,300 Per Week

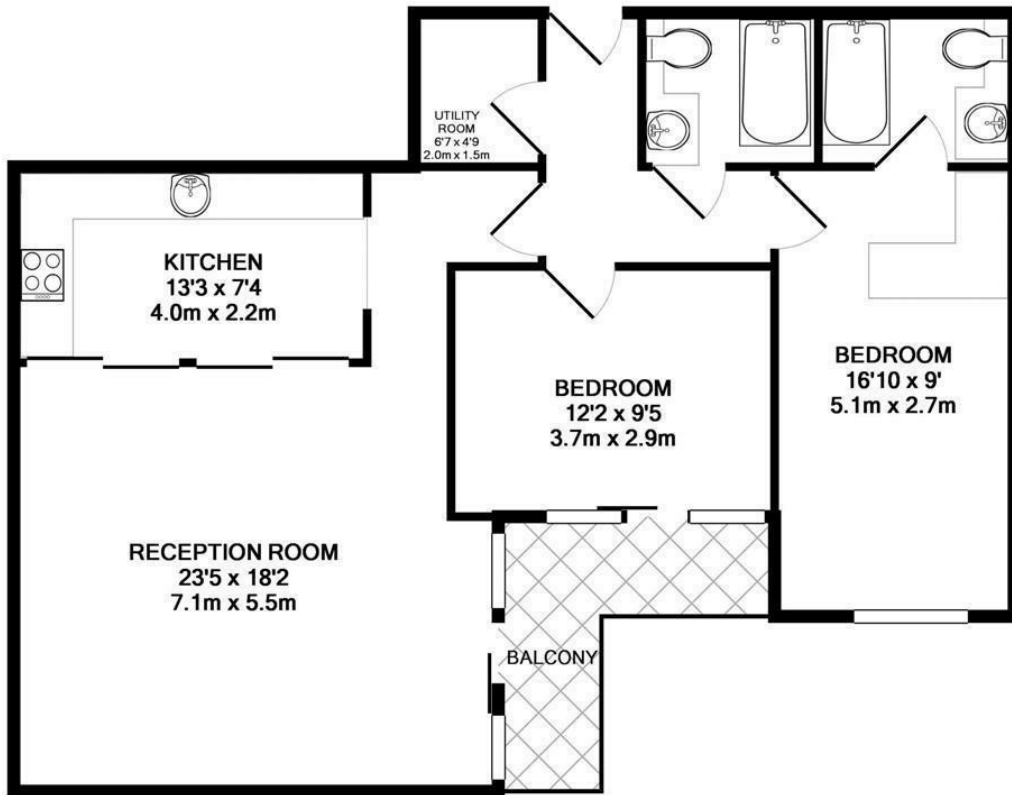
- Furnished
- Spacious two double bedrooms
- Two modern bathrooms
- Modern fitted kitchen with integrated appliances.
- Residents benefit from 24-hour concierge services
- Lovely Private Balcony
- Access to beautifully maintained communal gardens and meeting rooms.
- Includes a secure underground parking space.
- Abundance of natural light
- Conveniently located near Limehouse DLR station, the Thames footpath and Canary Wharf.

EPC rating- C  
Tax band- E



A very well presented two double bedroom second floor apartment located in the popular Mosaic development on Narrow Street. The property benefits from having a bright and spacious lounge with floor to ceiling windows and wood flooring which leads onto a private balcony, fully equipped kitchen with integrated appliances, fitted bedrooms with en-suite to master bedroom and additional second bathroom and wrap around balcony.

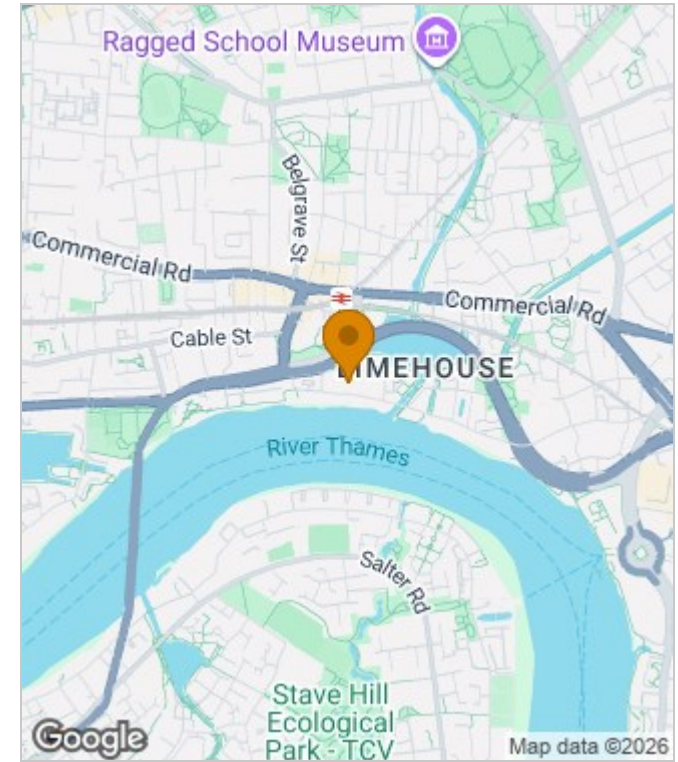
There is a 24 hour concierge, communal gardens and conference rooms that be hired out. The property is ideally located for Limehouse DLR giving easy access to Canary Wharf and the City.



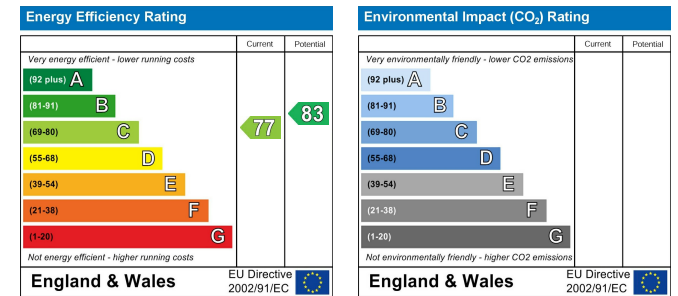
**IONIAN BUILDING SECOND FLOOR**  
**TOTAL APPROX. FLOOR AREA 843 SQ.FT. (78.4 SQ.M.)**

Whilst every attempt has been made to ensure the accuracy of the floor plan contained here, measurements of doors, windows, rooms and any other items are approximate and no responsibility is taken for any error, omission, or mis-statement. This plan is for illustrative purposes only and should be used as such by any prospective purchaser. The services, systems and appliances shown have not been tested and no guarantee as to their operability or efficiency can be given  
 Made with Metropix ©2010

**Area Map**



**Energy Performance Graph**



These particulars, whilst believed to be accurate are set out as a general outline only for guidance and do not constitute any part of an offer or contract. Intending purchasers should not rely on them as statements of representation of fact, but must satisfy themselves by inspection or otherwise as to their accuracy. No person in this firm's employment has the authority to make or give any representation or warranty in respect of the property.